

Mineralische Flammschutzmittel für
Mineral flame retardants for

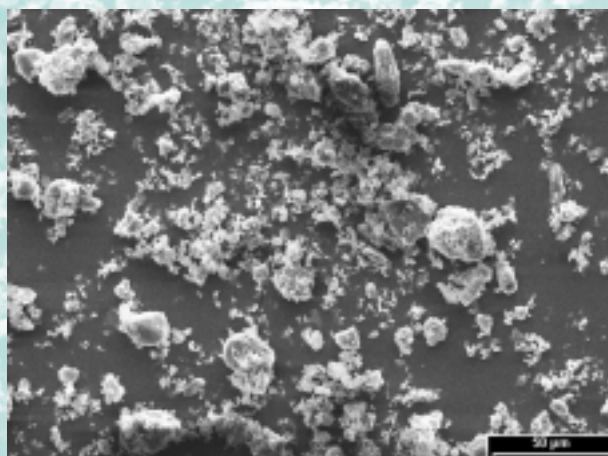
- **Bauindustrie / Construction industry**
- **Fahrzeugbau / Public transport**
- **Elektro-/Elektronikindustrie / Electronic industry**

APYRAL®

Durchschnittsanalyse / Typical analysis		APYRAL 22	APYRAL 33
Al (OH) ₃ - Gehalt / -Content	[%]	99.7	99.7
Feuchte / Moisture	[%]	0.15	0.15
Glühverlust / Loss on ignition	[%]	34.6	34.6
Teilchengröße / Particle size			
(Laserbeugung) / (Laser diffraction)	D ₁₀ [µm]	1	1
	D ₅₀ [µm]	12	6
	D ₉₀ [µm]	40	20
Siebrückstand / Sieve analysis			
(> 45 µm)	[%]	5	0.1
Spezifische Oberfläche / Specific surface area			
(BET)	[m ² /g]	2	3
Schüttdichte / Bulk density			
	[kg/m ³]	600	550
Ölaufnahme / Oil absorption			
	[ml/100g]	13	15
Weißgrad / Whiteness			
(Elrepho 457 nm)	[%]	95	96
Spezifische Leitfähigkeit / Specific conductivity			
	[µS/cm]	60	60
Brechungsindex / Refractive index			
		1.58	1.58
Härteindex (Mohs) / Mohs hardness			
		3	3
Dichte / Density			
	[g/cm ³]	2.4	2.4

Produktvorteile / Product properties

- **Niedrige Viskosität**
Low viscosity
- **Geringe Sedimentation**
Low sedimentation
- **Sehr hohe Packungsdichte**
Extreme high packing density
- **Gute Oberflächenqualität**
Good surface quality



Beispiele für den Einsatz von APYRAL 22, APYRAL 33 / Examples for the use of APYRAL 22, APYRAL 33



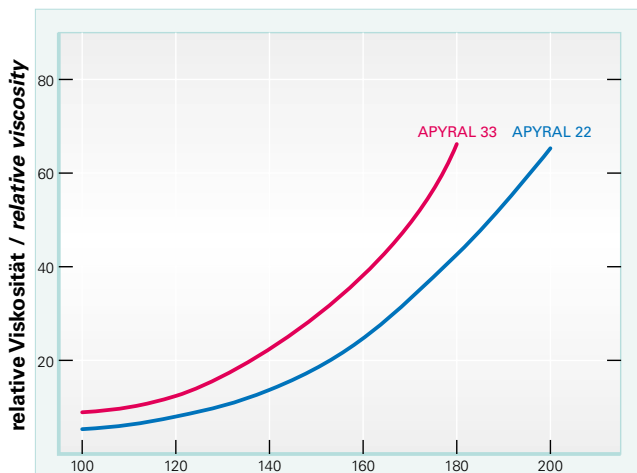
Innenausstattung Schienenfahrzeuge
Interiors for railway cars



Profile im Objektbau
Constructions profiles

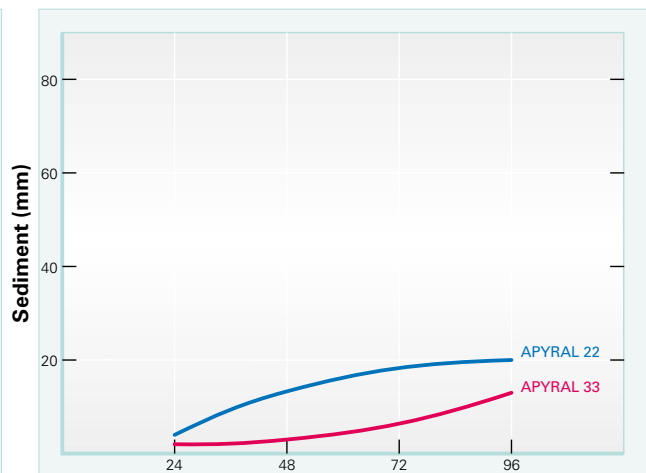
Produkt-/Product-Information

Viskositätsverhalten in UP-Harz Palapreg P17
Viscosity behaviour in UP-resin Palapreg P17



Teile ATH auf 100 Teile Harz / Parts of ATH in 100 parts of resin

Absetzverhalten in UP-Harz Palapreg P80 (Füllgrad 50%)
Settling behaviour in UP-resin Palapreg P80 (Filling level 50%)



Zeitdauer / Period of time (h)

For further information, please contact:

Nabaltec AG
P. O. Box 1860 · D-92409 Schwandorf
Phone +49(0) 94 31 53 - 0
Fax +49(0) 94 31 6 15 57
www.nabaltec.de

Business Unit Flame Retardants

Phone +49(0) 94 31 53-4 62/4 58/4 67
fillers@nabaltec.de

All data listed in this brochure are reference values and subject to production tolerances. These values are exclusive to the product description and no guarantee is placed on the properties. It remains the responsibility of the users to test the suitability of the product for their application.