

**Mineralische Flammschutzmittel für**  
**Mineral flame retardants for**

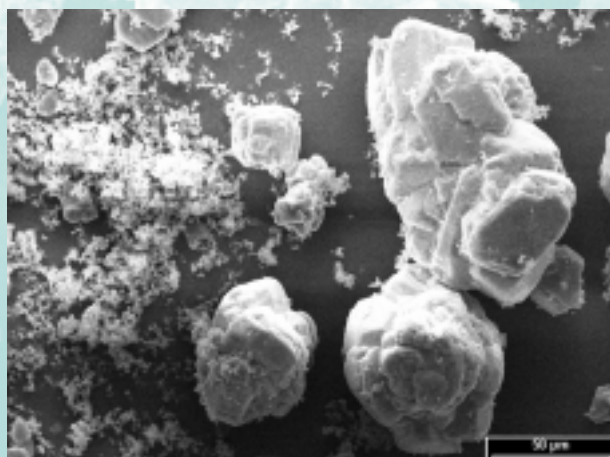
- **Bauindustrie / Construction industry**
- **Fahrzeugbau / Public transport**
- **Elektro-/Elektronikindustrie / Electronic industry**

**APYRAL®**

<b>Durchschnittsanalyse / Typical analysis</b>		<b>APYRAL 20X</b>	<b>APYRAL 30X</b>
Al (OH) <sub>3</sub> - Gehalt / -Content	[%]	99.7	99.7
Feuchte / Moisture	[%]	0.1	0.1
Glühverlust / Loss on ignition	[%]	34.6	34.6
<b>Teilchengröße / Particle size</b>			
(Laserbeugung) / (Laser diffraction)	D <sub>10</sub> [µm]	0.5	0.5
	D <sub>50</sub> [µm]	8	7
	D <sub>90</sub> [µm]	80	45
<b>Siebrückstand / Sieve analysis</b>			
(> 45 µm)	[%]	35	10
<b>Spezifische Oberfläche / Specific surface area</b>			
(BET)	[m <sup>2</sup> /g]	1.2	1.5
<b>Schüttdichte / Bulk density</b>			
	[kg/m <sup>3</sup> ]	550	500
<b>Ölaufnahme / Oil absorption</b>			
	[ml/100g]	12	13
<b>Weißgrad / Whiteness</b>			
(Elrepho 457 nm)	[%]	90	94
<b>Spezifische Leitfähigkeit / Specific conductivity</b>			
	[µS/cm]	50	50
<b>Brechungsindex / Refractive index</b>			
		1.58	1.58
<b>Härteindex (Mohs) / Mohs hardness</b>			
		3	3
<b>Dichte / Density</b>			
	[g/cm <sup>3</sup> ]	2.4	2.4

**Produktvorteile / Product properties**

- **Bimodale Kornverteilung**  
**Bimodal grain size distribution**
- **Extrem niedrige Viskosität**  
**Extremely low viscosity**
- **Extrem hohe Füllgrade**  
**Extremely high filling levels**
- **Optimierte Topfzeiten**  
**Optimised pot life**



## Beispiele für den Einsatz von APYRAL 20X, APYRAL 30X / Examples for the use of APYRAL 20X, APYRAL 30X



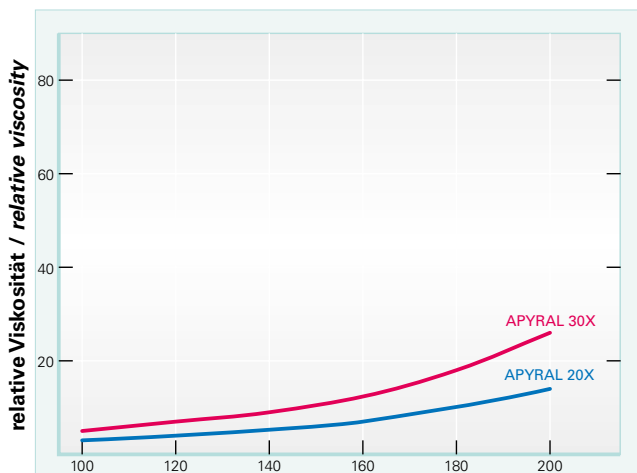
**Innenausstattung Schienenfahrzeuge**  
*Interiors for railway cars*



**Profile im Objektbau / Constructions profiles**

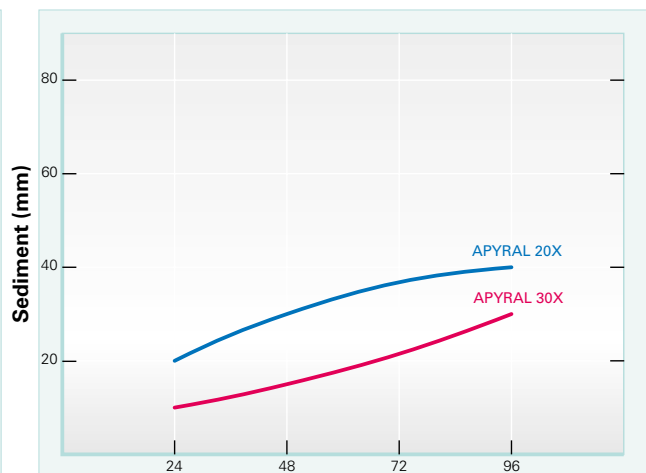
## Produkt-/Product-Information

**Viskositätsverhalten in UP-Harz Palapreg P17**  
*Viscosity behaviour in UP-resin Palapreg P17*



**Teile ATH auf 100 Teile Harz / Parts of ATH in 100 parts of resin**

**Absetzverhalten in UP-Harz Palapreg P80 (Füllgrad 50%)**  
*Settling behaviour in UP-resin Palapreg P80 (Filling level 50%)*



**Zeitdauer / Period of time (h)**

For further information, please contact:

**Nabaltec AG**  
P. O. Box 1860 · D-92409 Schwandorf  
Phone +49(0) 94 31 53 - 0  
Fax +49(0) 94 31 6 15 57  
www.nabaltec.de

### Business Unit Flame Retardants

Phone +49(0) 94 31 53-4 62/4 58/4 67  
fillers@nabaltec.de

All data listed in this brochure are reference values and subject to production tolerances. These values are exclusive to the product description and no guarantee is placed on the properties. It remains the responsibility of the users to test the suitability of the product for their application.