

**APYRAL®**

**Produkt- / Product-Information**  
**APYRAL 1E**

**Nabaltec**

**Mineralisches Flammenschutzmittel für**  
*Mineral flame retardant for*

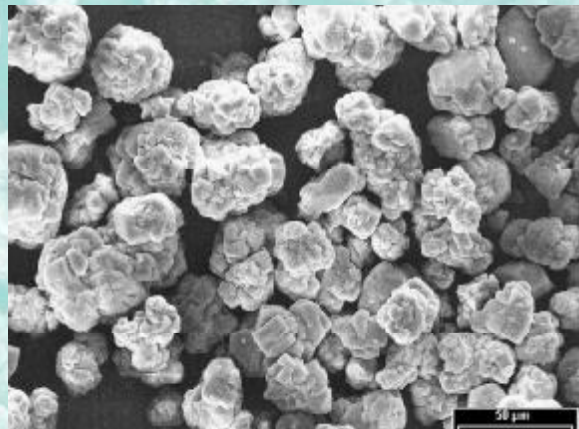
- **Bauindustrie / Construction industry**
- **Elektro-/Elektronikindustrie / Electronic industry**

**APYRAL®**

<b>Durchschnittsanalyse / Typical analysis</b>		<b>APYRAL 1E</b>
Al(OH) <sub>3</sub> - Gehalt / -Content	[%]	99.7
Feuchte / Moisture	[%]	0.05
Glühverlust / Loss on ignition	[%]	34.6
<b>Teilchengröße / Particle size</b> (Laserbeugung) / (Laser diffraction)		
	D <sub>10</sub> [µm]	10
	D <sub>50</sub> [µm]	50
	D <sub>90</sub> [µm]	100
<b>Siebrückstand / Sieve analysis</b> (> 45 µm)	[%]	50
<b>Spezifische Oberfläche / Specific surface area</b> (BET)	[m <sup>2</sup> /g]	0.2
<b>Schüttdichte / Bulk density</b>	[kg/m <sup>3</sup> ]	1000
<b>Ölaufnahme / Oil absorption</b>	[ml/100g]	21
<b>Weißgrad / Whiteness</b> (Elrepho 457 nm)	[%]	80
<b>Spezifische Leitfähigkeit / Specific conductivity</b>	[µS/cm]	30
<b>Brechungsindex / Refractive index</b>		1.58
<b>Härteindex (Mohs) / Mohs hardness</b>		3
<b>Dichte / Density</b>	[g/cm <sup>3</sup> ]	2.4

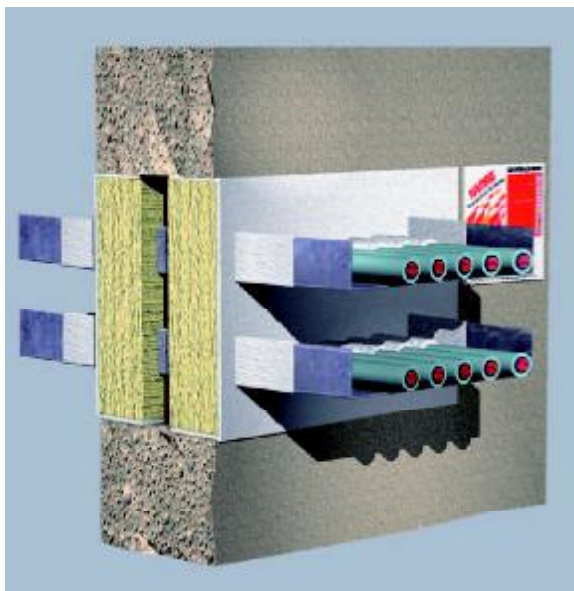
**Produktvorteile / Product properties**

- **Hohe chemische Reinheit**  
*High chemical purity*
- **Gutes Fließverhalten**  
*Good flow properties*
- **Geringe Staubentwicklung**  
*Reduced formation of dust*
- **Gute Verarbeitbarkeit**  
*Good processability*

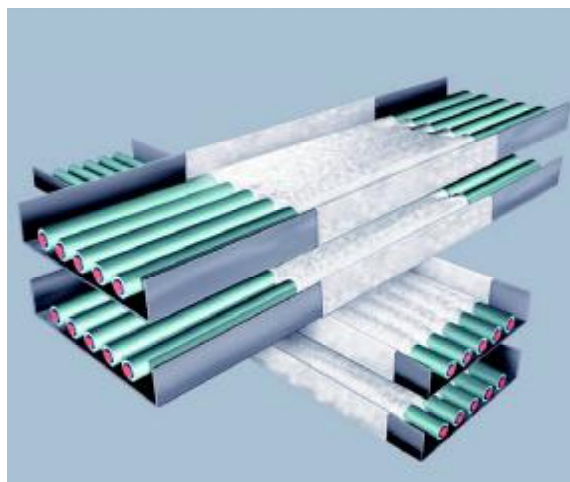




## Beispiele für den Einsatz von APYRAL 1E / Examples for the use of APYRAL 1E



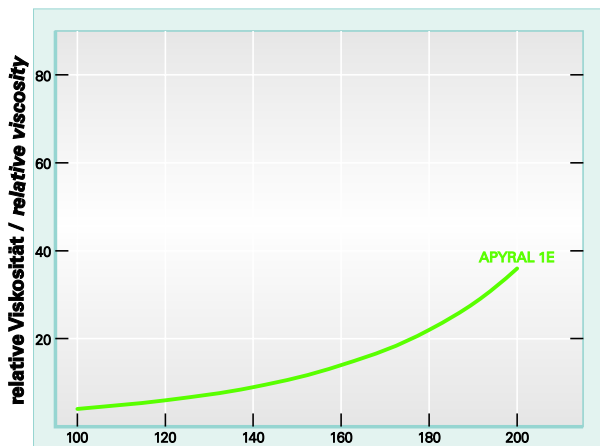
**Plattenschott**  
Fire stop coated board system



**Kabelbeschichtung**  
Fire protection cable coating

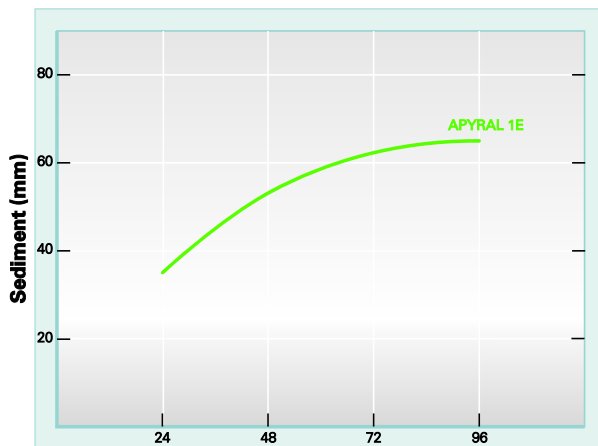
## Produkt-/Product-Information

### Viskositätsverhalten in UP-Harz Palapreg P17 Viscosity behaviour in UP-resin Palapreg P17



Teile ATH auf 100 Teile Harz / Parts of ATH in 100 parts of resin

### Absetzverhalten in UP-Harz Palapreg P80 (Füllgrad 50%) Settling behaviour in UP-resin Palapreg P80 (Filling level 50%)



Zeitdauer / Period of time (h)

For further information, please contact:

**Nabaltec** GmbH  
P. O. Box 1860 · D-92409 Schwandorf  
Phone +49(0) 94 31 53 - 0  
Fax +49(0) 94 31 615 57  
www.nabaltec.de

### Sales Dept. Fillers

Phone +49(0) 94 31 53-4 62/4 58  
fillers@nabaltec.de

All data listed in this brochure are reference values and subject to production tolerances. These values are exclusive to the product description and no guarantee is placed on the properties. It remains the responsibility of the users to test the suitability of the product for their application.