

Mineralische Flammschutzmittel für
Mineral flame retardants for

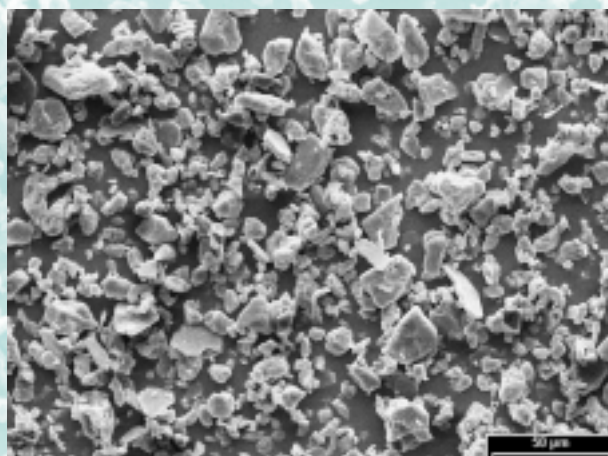
- **Elektro-/Elektronikindustrie / Electronic industry**
- **Farben-/Lackindustrie / Paint industry**
- **Klebstoffindustrie / Adhesives industry**

APYRAL®

Durchschnittsanalyse / Typical analysis		APYRAL 2E	APYRAL 3	APYRAL 4
Al (OH) ₃ - Gehalt / -Content	[%]	99.7	99.7	99.7
Feuchte / Moisture	[%]	0.1	0.1	0.1
Glühverlust / Loss on ignition	[%]	34.6	34.6	34.6
Teilchengröße / Particle size				
(Laserbeugung) / (Laser diffraction)	D ₁₀ [µm]	3	2	2
	D ₅₀ [µm]	20	16	12
	D ₉₀ [µm]	50	35	23
Siebückstand / Sieve analysis				
(> 45 µm)	[%]	15	5	0.1
Spezifische Oberfläche / Specific surface area				
(BET)	[m ² /g]	0.5	0.6	0.7
Schüttdichte / Bulk density				
	[kg/m ³]	950	900	750
Ölaufnahme / Oil absorption				
	[ml/100g]	18	20	21
Weißgrad / Whiteness				
(Elrepho 457 nm)	[%]	87	89	90
Spezifische Leitfähigkeit / Specific conductivity				
	[µS/cm]	30	30	40
Brechungsindex / Refractive index				
		1.58	1.58	1.58
Härteindex (Mohs) / Mohs hardness				
		3	3	3
Dichte / Density				
	[g/cm ³]	2.4	2.4	2.4

Produktvorteile / Product properties

- **Geringer Feinanteil**
Low amount of fine particles
- **Niedrige Viskosität**
Low viscosity
- **Gutes Fließverhalten**
Good flow properties
- **Geringe spezifische Leitfähigkeit**
Reduced specific conductivity



Beispiele für den Einsatz von APYRAL 2E, APYRAL 3, APYRAL 4 / Examples for the use of APYRAL 2E, APYRAL 3, APYRAL 4



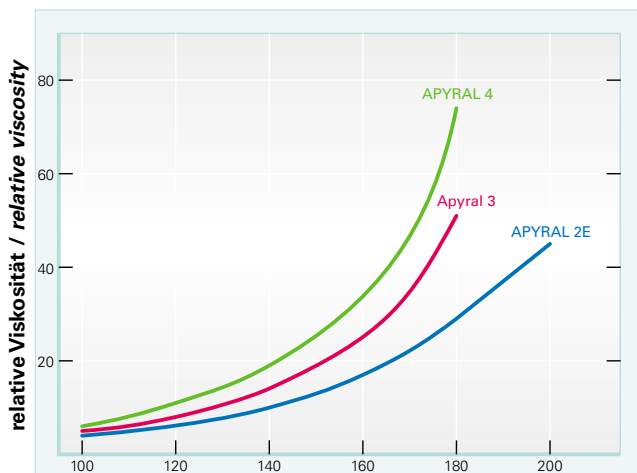
Elektrische Bauteile / Electronic components



Farben / Paints

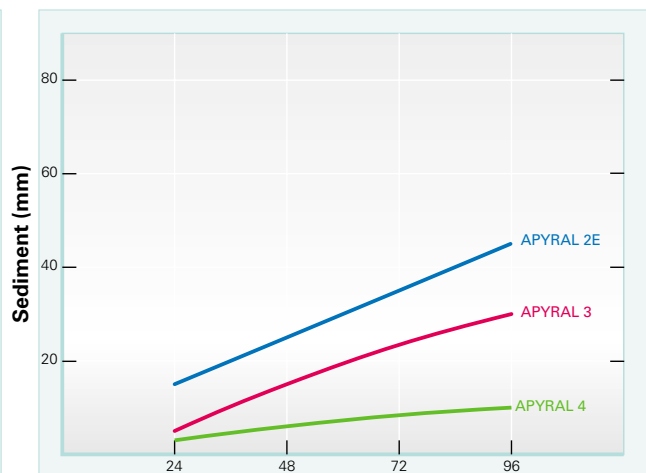
Produkt-/Product-Information

Viskositätsverhalten in UP-Harz Palapreg P17
Viscosity behaviour in UP-resin Palapreg P17



Teile ATH auf 100 Teile Harz / Parts of ATH in 100 parts of resin

Absetzverhalten in UP-Harz Palapreg P80 (Füllgrad 50%)
Settling behaviour in UP-resin Palapreg P80 (Filling level 50%)



Zeitdauer / Period of time (h)

For further information, please contact:

Nabaltec AG
P. O. Box 1860 · D-92409 Schwandorf
Phone +49(0) 94 31 53 - 0
Fax +49(0) 94 31 6 15 57
www.nabaltec.de

Business Unit Flame Retardants

Phone +49(0) 94 31 53-4 62/4 58/4 67
fillers@nabaltec.de

All data listed in this brochure are reference values and subject to production tolerances. These values are exclusive to the product description and no guarantee is placed on the properties. It remains the responsibility of the users to test the suitability of the product for their application.