

Mineralische Flammschutzmittel für
Mineral flame retardants for

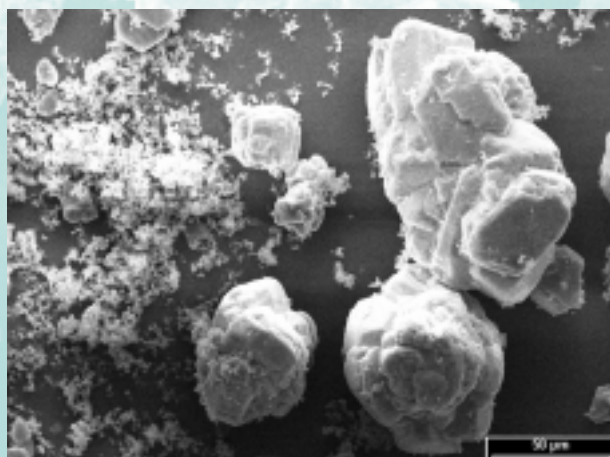
- **Bauindustrie / Construction industry**
- **Fahrzeugbau / Public transport**
- **Elektro-/Elektronikindustrie / Electronic industry**

APYRAL®

Durchschnittsanalyse / Typical analysis		APYRAL 20X	APYRAL 30X
Al (OH) ₃ - Gehalt / -Content	[%]	99.7	99.7
Feuchte / Moisture	[%]	0.1	0.1
Glühverlust / Loss on ignition	[%]	34.6	34.6
Teilchengröße / Particle size			
(Laserbeugung) / (Laser diffraction)	D ₁₀ [µm]	0.5	0.5
	D ₅₀ [µm]	8	7
	D ₉₀ [µm]	80	45
Siebrückstand / Sieve analysis			
(> 45 µm)	[%]	35	10
Spezifische Oberfläche / Specific surface area			
(BET)	[m ² /g]	1.2	1.5
Schüttdichte / Bulk density			
	[kg/m ³]	550	500
Ölaufnahme / Oil absorption			
	[ml/100g]	12	13
Weißgrad / Whiteness			
(Elrepho 457 nm)	[%]	90	94
Spezifische Leitfähigkeit / Specific conductivity			
	[µS/cm]	50	50
Brechungsindex / Refractive index			
		1.58	1.58
Härteindex (Mohs) / Mohs hardness			
		3	3
Dichte / Density			
	[g/cm ³]	2.4	2.4

Produktvorteile / Product properties

- **Bimodale Kornverteilung**
Bimodal grain size distribution
- **Extrem niedrige Viskosität**
Extremely low viscosity
- **Extrem hohe Füllgrade**
Extremely high filling levels
- **Optimierte Topfzeiten**
Optimised pot life



Beispiele für den Einsatz von APYRAL 20X, APYRAL 30X / Examples for the use of APYRAL 20X, APYRAL 30X



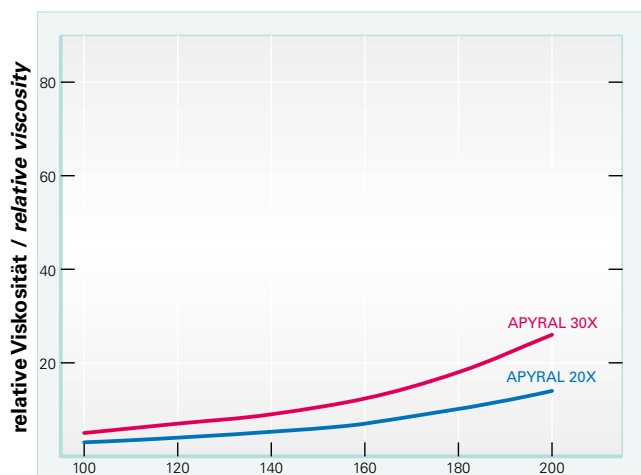
Innenausstattung Schienenfahrzeuge
Interiors for railway cars



Profile im Objektbau / Constructions profiles

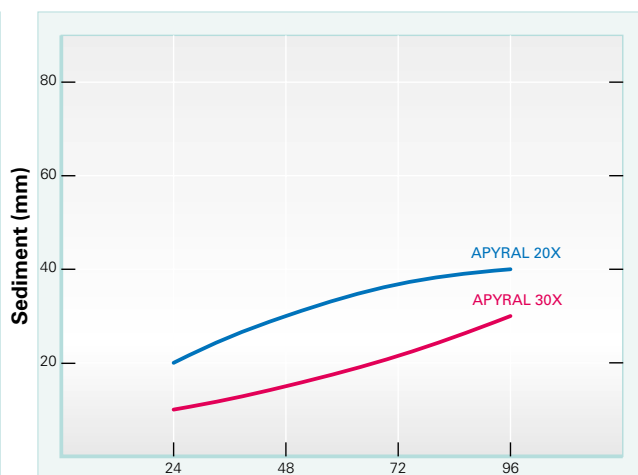
Produkt-/Product-Information

Viskositätsverhalten in UP-Harz Palapreg P17
Viscosity behaviour in UP-resin Palapreg P17



Teile ATH auf 100 Teile Harz / Parts of ATH in 100 parts of resin

Absetzverhalten in UP-Harz Palapreg P80 (Füllgrad 50%)
Settling behaviour in UP-resin Palapreg P80 (Filling level 50%)



Zeitdauer / Period of time (h)

For further information, please contact:

Nabaltec AG
P. O. Box 1860 · D-92409 Schwandorf
Phone +49(0) 94 31 53 - 0
Fax +49(0) 94 31 6 15 57
www.nabaltec.de

Business Unit Flame Retardants

Phone +49(0) 94 31 53-4 62/4 58/4 67
fillers@nabaltec.de

All data listed in this brochure are reference values and subject to production tolerances. These values are exclusive to the product description and no guarantee is placed on the properties. It remains the responsibility of the users to test the suitability of the product for their application.