

**Mineralisches Flammenschutzmittel für**  
**Mineral flame retardant for**

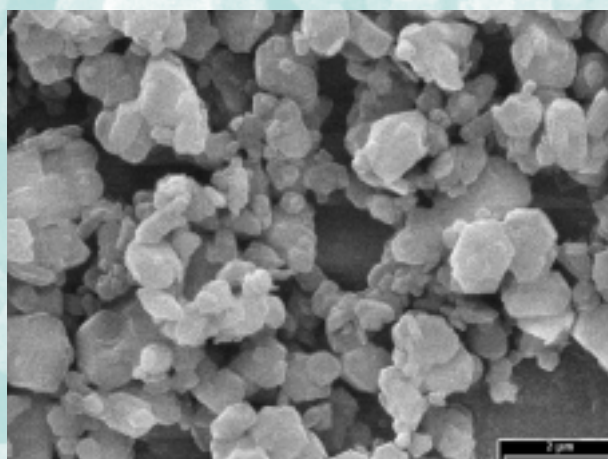
- **Kabelindustrie / Wire and cable industry**
- **Bauindustrie / Construction industry**
- **Fahrzeugbau / Public transport**

**APYRAL®**

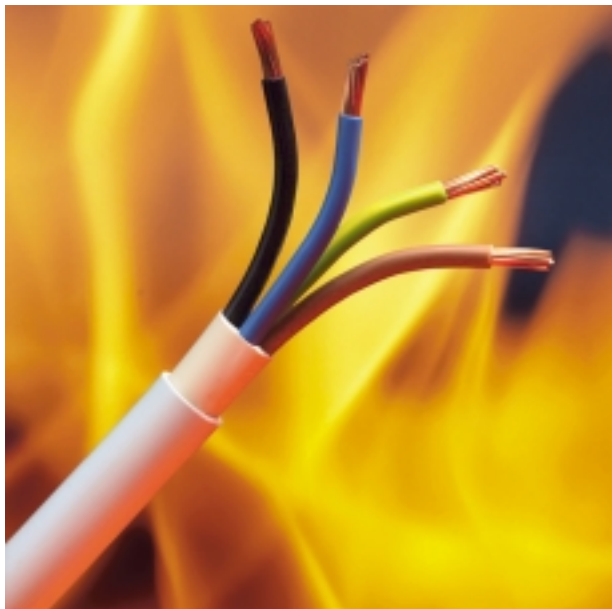
Durchschnittsanalyse / Typical analysis		APYRAL 40 CD
Al (OH) <sub>3</sub> - Gehalt / -Content	[%]	99.5
Feuchte / Moisture	[%]	0.2
Glühverlust / Loss on ignition	[%]	34.6
<b>Teilchengröße / Particle size</b>		
(Laserbeugung) / (Laser diffraction)	D <sub>10</sub> [µm]	0.6
	D <sub>50</sub> [µm]	1.3
	D <sub>90</sub> [µm]	3.2
<b>Siebrückstand / Sieve analysis</b>		
(> 45 µm)	[%]	0.01
<b>Spezifische Oberfläche / Specific surface area</b>		
(BET)	[m <sup>2</sup> /g]	3.5
<b>Schüttdichte / Bulk density</b>		
	[kg/m <sup>3</sup> ]	400
<b>Ölaufnahme / Oil absorption</b>		
	[ml/100g]	22
<b>Weißgrad / Whiteness</b>		
(Elrepho 457 nm)	[%]	98
<b>Spezifische Leitfähigkeit / Specific conductivity</b>		
	[µS/cm]	30
<b>Brechungsindex / Refractive index</b>		
		1.58
<b>Härteindex (Mohs) / Mohs hardness</b>		
		3
<b>Dichte / Density</b>		
	[g/cm <sup>3</sup> ]	2.4

**Produktvorteile / Product properties**

- **Gutes Förder- und Dosierverhalten**  
*Good conveyance and dosing*
- **Hohe Feinheit**  
*Very fine particles*
- **Sehr niedrige Ölaufnahme**  
*Very low oil absorption*
- **Hoher Compound-Schmelzeindex**  
*High compound melt flow index*
- **Hohe Extrusionsgeschwindigkeiten**  
*High extrusion speeds*



## Beispiele für den Einsatz von APYRAL 40CD / Examples for the use of APYRAL 40CD



**Halogenfrei flammgeschützte Kabel**  
*Halogen free flame retardant cables*

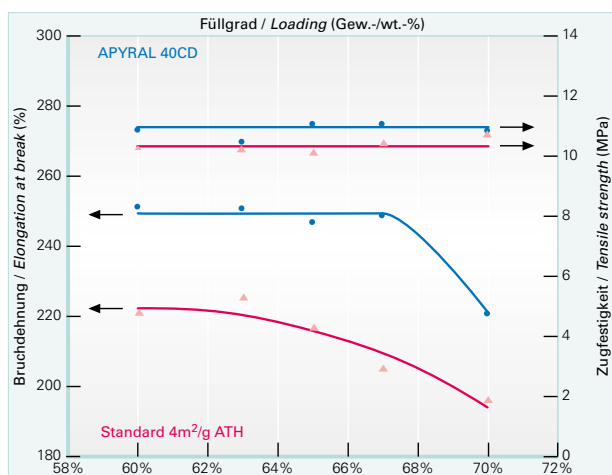


**Rauchgasreduzierter Thermoisolationsschaum**  
*Smoke suppressed thermoinsulation foam*

## Produkt- / Product-Information

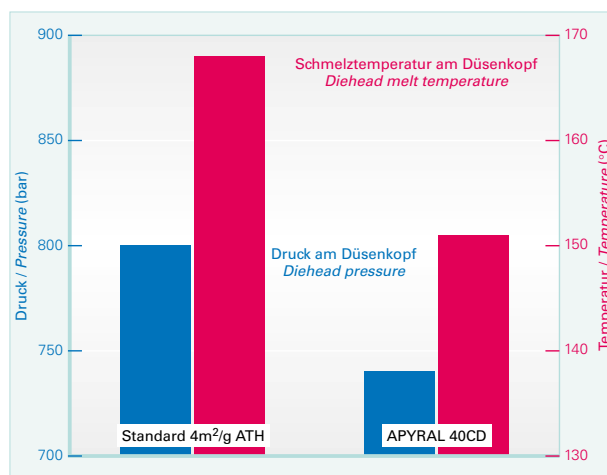
**Mechanische Eigenschaften von HFFR-PE/mPE Kabelcompounds**

*Mechanical Properties of HFFR-PE/mPE cable compounds*



**Extrusionsparameter eines HFFR-PE/EVA Compounds; Isolierung eines Kupferleiters mit 650 m/min**

*Extrusion parameters for an HFFR-PE/EVA Compound; insulation of a copper wire at 650 m/min*



For further information, please contact:

**Nabaltec AG**

P. O. Box 1860 · D-92409 Schwandorf

Phone +49(0) 94 31 53 - 0

Fax +49(0) 94 31 6 15 57

www.nabaltec.de

**Business Unit Flame Retardants**

Phone +49(0) 94 31 53-4 62/4 58/4 67

fillers@nabaltec.de

All data listed in this brochure are reference values and subject to production tolerances. These values are exclusive to the product description and no guarantee is placed on the properties. It remains the responsibility of the users to test the suitability of the product for their application.